

# SharePoint Explorer Client

Community Edition Version 2.0 Installation

## SharePoint Explorer Client 2.0 Community Edition Installation and Configuration Guide

Component	Installation Requirements
Server	<ul style="list-style-type: none"><li>• Windows Server 2003 with WSS or Portal versions 2003 or 2007</li></ul>
Client	<ul style="list-style-type: none"><li>• Microsoft Internet Explorer 6.0 or greater</li><li>• Microsoft .NET Framework 2.0 or higher</li><li>• Windows XP or Vista — <b>Vista Installation Note: please disable User Account Control during installation</b></li></ul>

### Installation Requirements

The following table summarizes the server and client requirements to install and use SharePoint Explorer Client. SharePoint Explorer Client works as an Internet Explorer plug-in and utilizes web services provided by the SharePoint server.

### Security Requirements

SharePoint Explorer utilizes the Microsoft SharePoint web services in order to return the site hierarchy. The security on these web services requires the user be a member of a Site Group with the “Browse Directories” Site Right. The “Reader” Site Group is the only group not having this right by default. It should be added if Readers will use SharePoint Explorer.

**Site Rights**

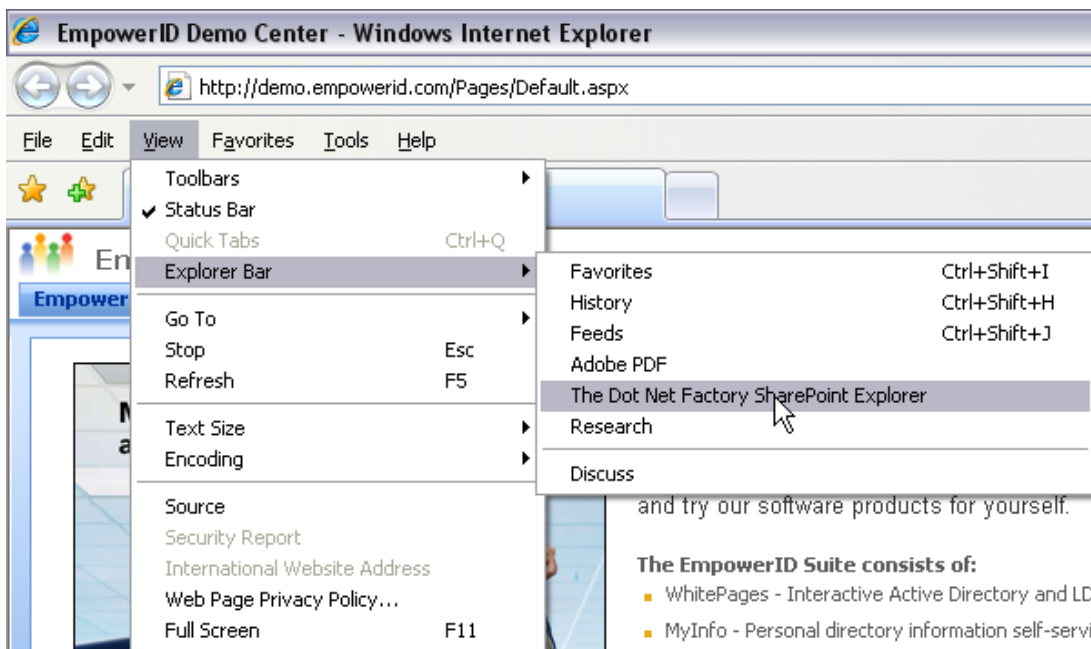
- Manage Site Groups - Create, change, and delete site groups, including adding users to the site groups and specifying which rights are assigned to a site group.
- View Usage Data - View reports on Web site usage.
- Create Subsites - Create subsites such as team sites, Meeting Workspace sites, and Document Workspace sites.
- Manage Web Site - Grants the ability to perform all administration tasks for the Web site as well as manage content and permissions.
- Add and Customize Pages - Add, change, or delete HTML pages or Web Part Pages, and edit the Web site using a Windows SharePoint Services-compatible editor.
- Apply Themes and Borders - Apply a theme or borders to the entire Web site.
- Apply Style Sheets - Apply a style sheet (.CSS file) to the Web site.
- Browse Directories - Browse directories in a Web site.
- View Pages - View pages in a Web site.

# SharePoint Explorer Client

Community Edition Version 2.0 Installation

## SharePoint Explorer Installation Steps

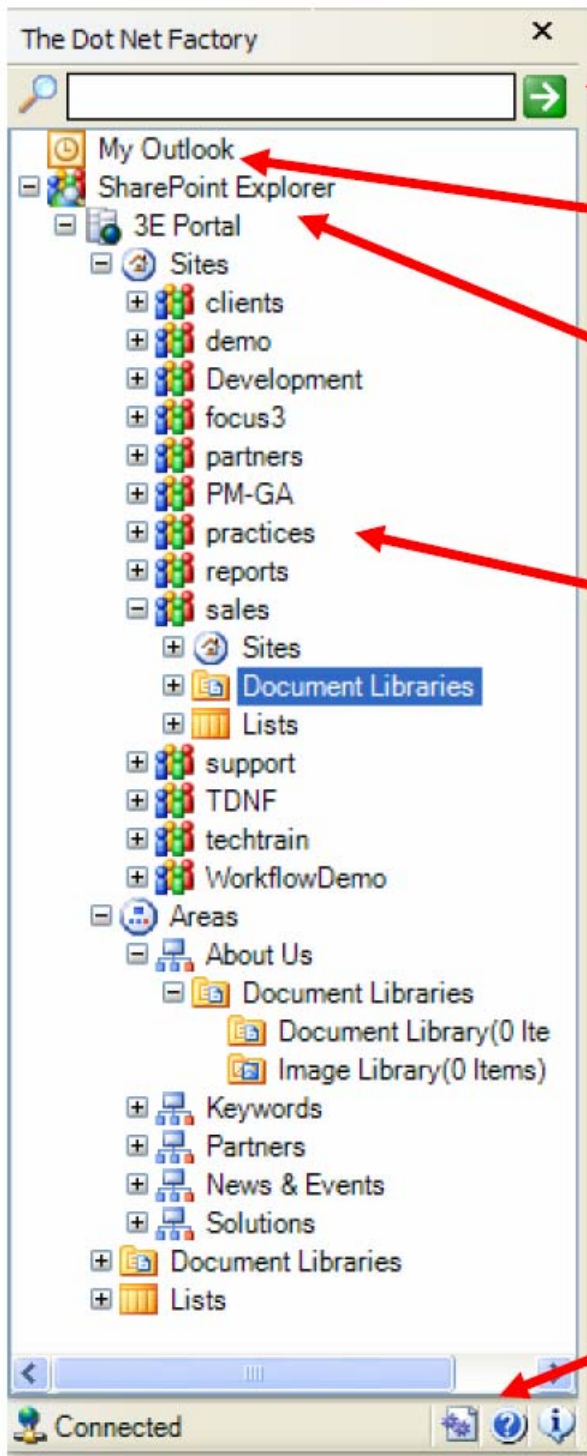
1. Run the SharePoint Explorer installation file while logged onto the PC as a local administrator. The currently logged on user must have the right to install software.
2. During the installation, select to install for all users.
3. Finish the installation and click close when complete.
4. Open Internet Explorer
5. From the View menu... select Explorer Bar... and The Dot Net Factory SharePoint Explorer—this will launch the application
6. You may add a button to launch SharePoint Explorer on your IE toolbar by right-clicking the toolbar and selecting customize - the SharePoint Explorer button should appear in the list of selectable options.



# SharePoint Explorer Client

Community Edition Version 2.0 Installation

## A Brief Tour of the SharePoint Explorer Interface



### Search Box

Search WSS and Portal Servers

### My Outlook

Quick access to local Outlook mail

### Root Node

Right click here to add servers

### SharePoint Tree-View

Hierarchical tree-view of all servers, sites, sub-sites, document libraries, and lists. Right click on any node to see context specific menus of common actions.

### Configuration Icon

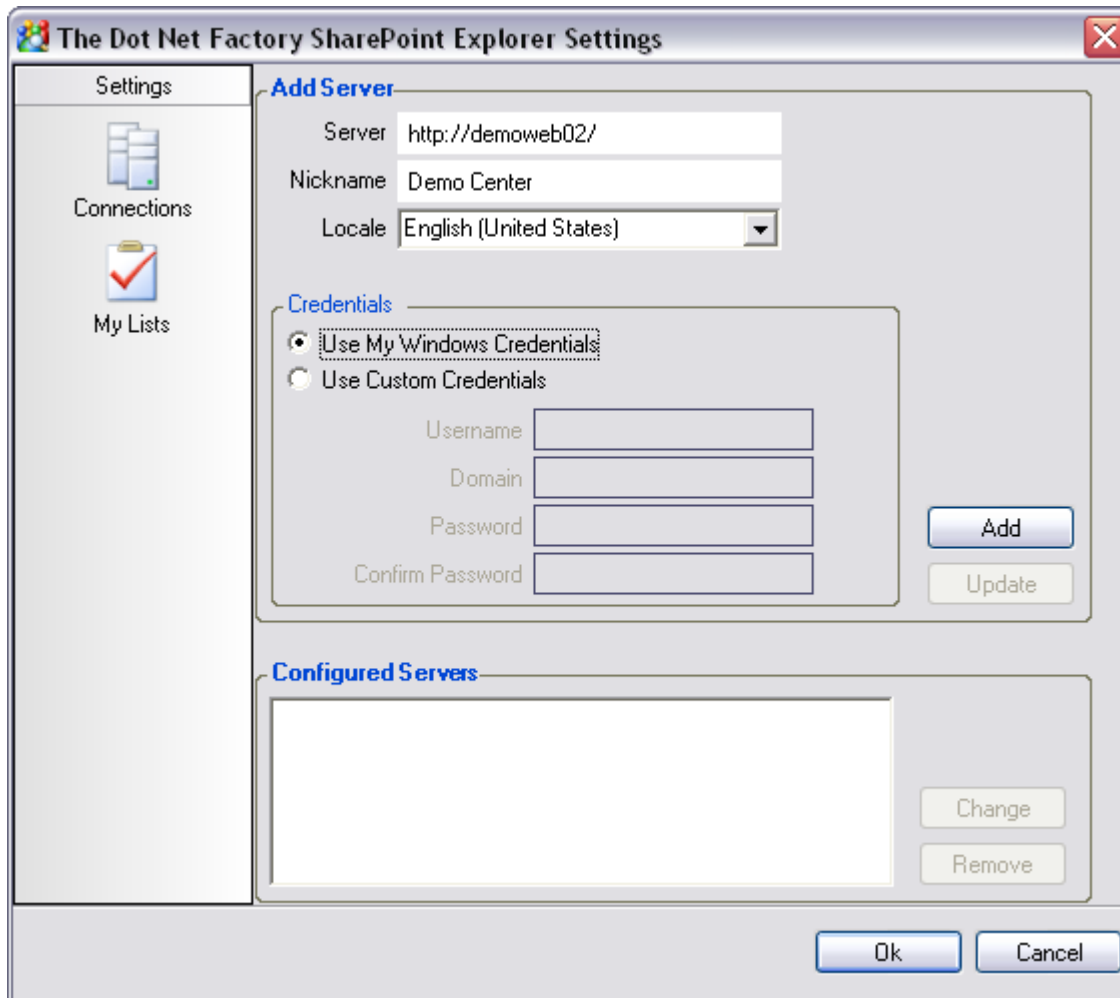
Double click here to open the configuration window

# SharePoint Explorer Client

Community Edition Version 2.0 Installation

## SharePoint Explorer Configuration Options

The settings window is accessible at any time by right clicking on the root node and selecting “Configure Connections” or by double clicking on the configuration icon at the bottom of the SharePoint Explorer pane.

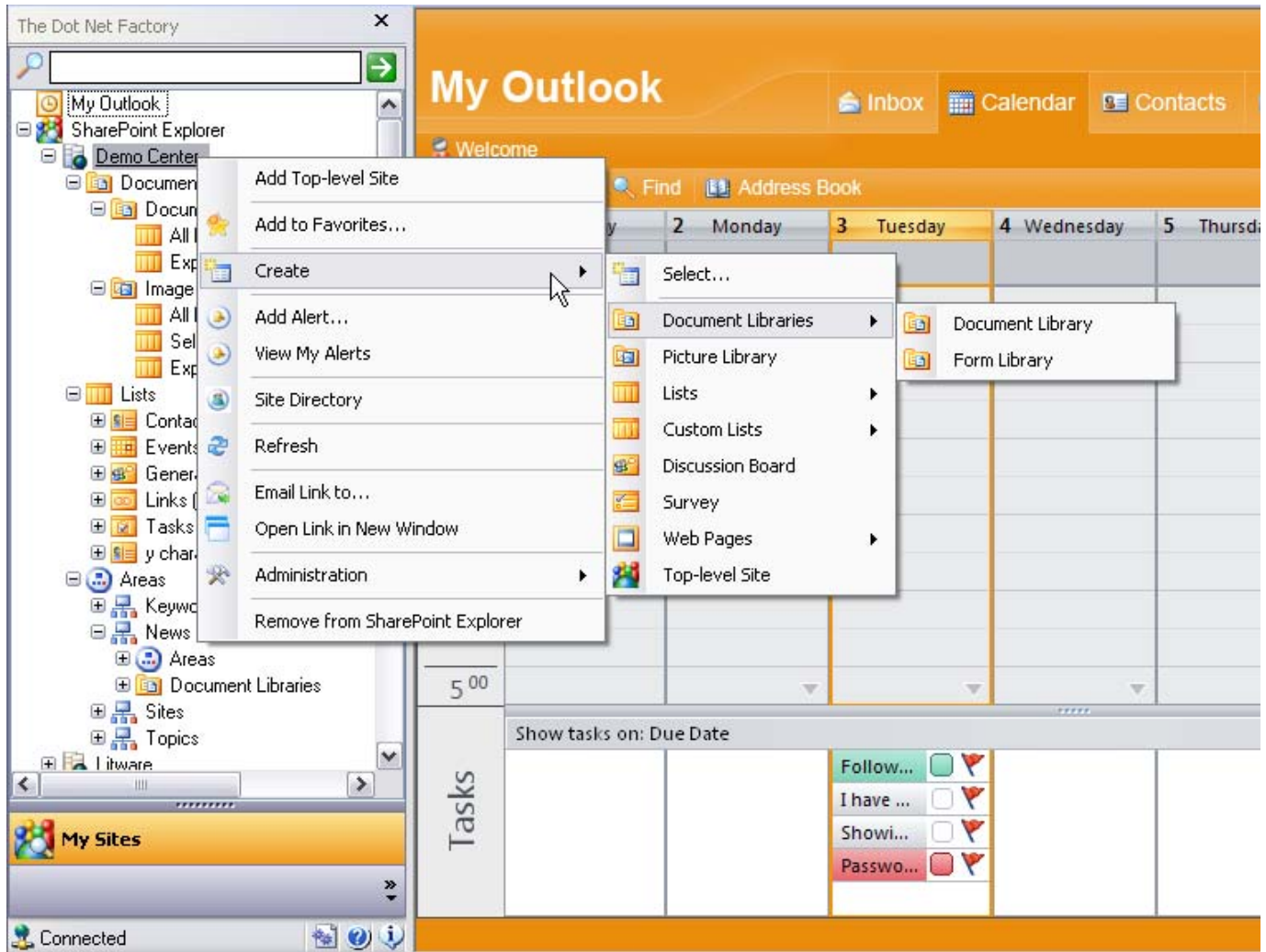


SharePoint Explorer allows adding an unlimited number of Windows SharePoint Services and SharePoint Portal servers. Servers can be added multiple times to “root” the tree at different sites or sub-sites. Alternate credential can be specified on a site-by-site basis. Add your SharePoint servers and click ok. Your servers should now appear in the SharePoint Explorer tree.

# SharePoint Explorer Client

Community Edition Version 2.0 Installation

SharePoint explorer provides handy right-click options for all common tasks. The right click options are security sensitive and present the user with only the appropriate options given their permissions for the selected node.



For more information on SharePoint Explorer or any of our other products, please visit our website <http://www.thedotnetfactory.com/>

**Thank you and please enjoy our Community Edition of SharePoint Explorer.**